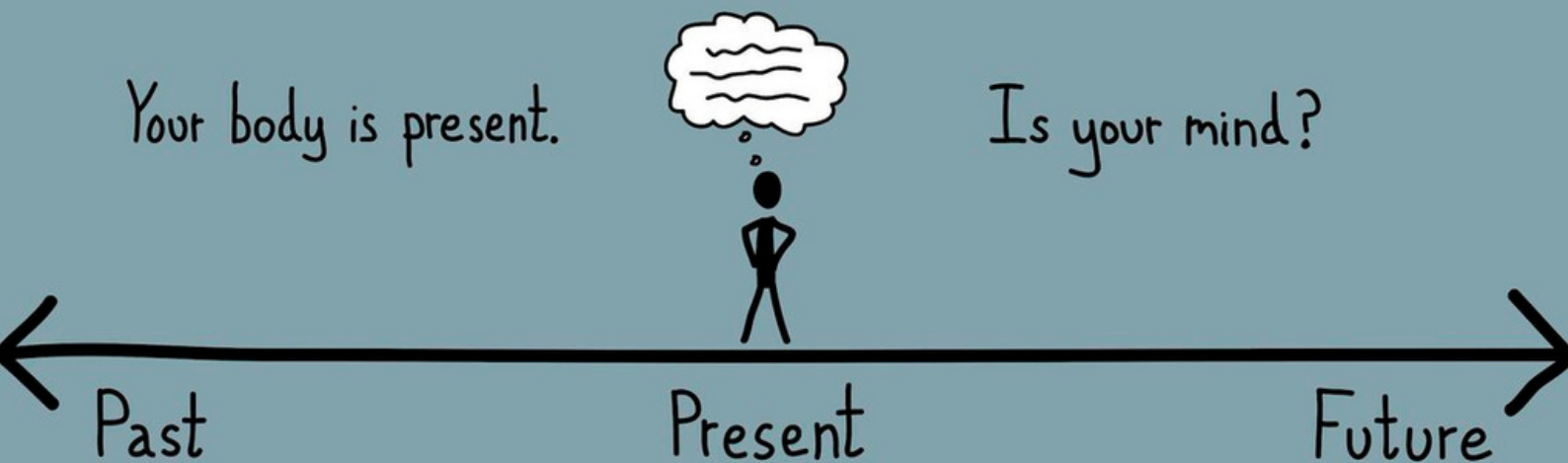


EL RODEO

April 14, 2021



WHAT'S IN THIS ISSUE

- Tom Sullivan- 1
- Brenton Weekly- 2
- Rotary Cares- 3-4
- Scholarship Recipient- 5
- Friday Meeting- 6
- Calendar of Events- 7
- Call To Action- 8
- Spotlight!- 9
- Survey- 10
- Celebration of Life -11
- Print with Pace, Plant Trees- 12
- Birthdays- 13
- Anniversaries- 14

**"REALIZE DEEPLY
THAT THE PRESENT
MOMENT IS ALL YOU
EVER HAVE."**

Eckhart Tolle

**THIS ISSUE IS DEDICATED TO
TOM SULLIVAN**

Dear Tom,

Thank you for your many years of friendship and service to LA5. We hope you find comfort in knowing you made a lasting impact on the lives of so many in our club, our community and around the world.

We are thinking of you and sending all our love and prayers!

Your friends at LA5

BRENTON WEEKLY

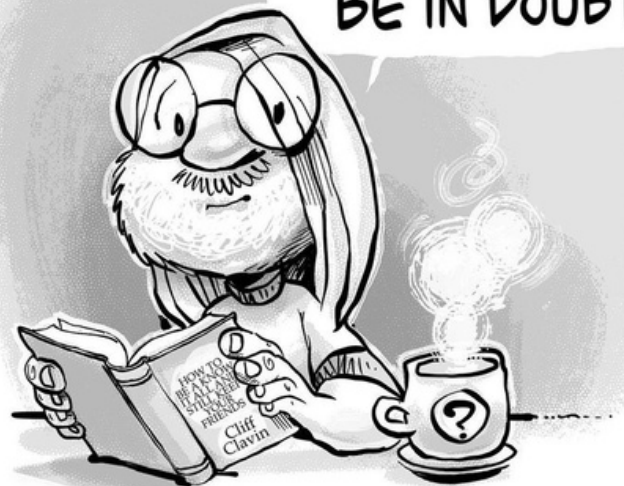
WELL...I GUESS IT'S ABOUT TIME FOR ME TO PUT THE CHRISTMAS DECORATIONS AWAY.



Brenton
©COPYRIGHT 2021

Brenton
©COPYRIGHT 2021

WHEN IN DOUBT, DO A FACT CHECK. WHEN CERTAIN, BE IN DOUBT.

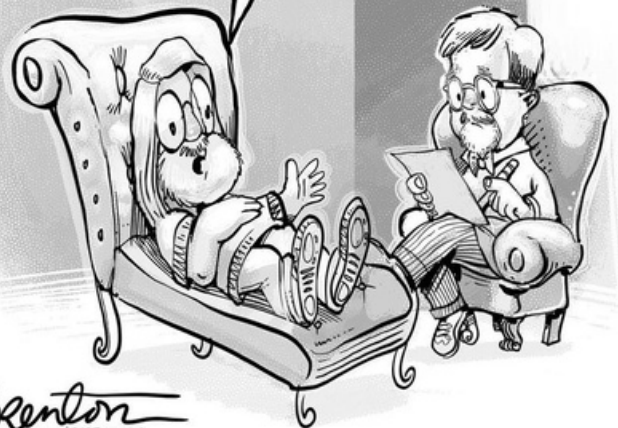


I LIVE BY A SIMPLE CODE. UNFORTUNATELY, I CAN'T REMEMBER IT AND NOW I'M LOCKED OUT OF MY PHONE.



Brenton
©COPYRIGHT 2021

I FEAR THAT SOMEDAY I WILL SAY WHAT I REALLY THINK AND EVEN I WILL BE SHOCKED AND HORRIFIED.

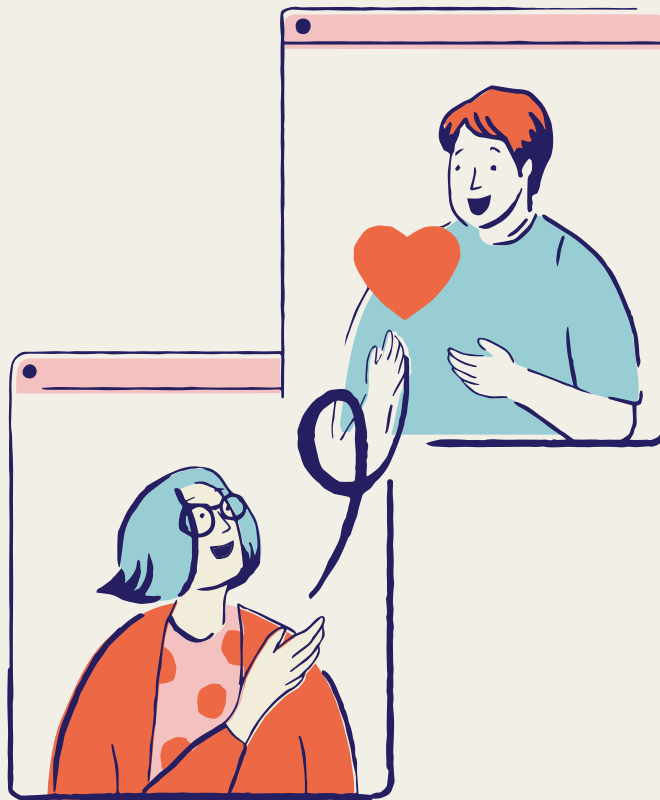


Brenton
©COPYRIGHT 2021



@brenton.daily

VIRTUAL HUGS



REMEMBER TO SEND US...

CELEBRATIONS:

Share your special occasions, vacations, events with your Rotary friends (pictures to prove it happened are welcome)

VIRTUAL HUG REQUESTS:

We will send confidential virtual hugs to any Rotarian upon your request with love, well wishes, and comfort from Rotary

SEND INFO TO:

Brenda Wiewel (frankens@usc.edu) or
Walker Railey (walkerrailey@gmail.com)

AND CELEBRATION

SOCIETY OF LA5

LET'S CELEBRATE!

- CONGRATULATIONS TO CHRISSY MOSES ON HER 7TH WEDDING ANNIVERSARY!!

GIVE A HUG!

- TO THE SULLIVAN FAMILY AT THE LOSS OF THEIR DEAR LOVED ONE, TOM SULLIVAN (PP LA5 ROTARY)



GET TO KNOW OUR...

SCHOLARSHIP RECIPIENT

WHERE DID YOU ATTEND SCHOOL?

University of California, San Diego

HOW DID YOU USE YOUR SCHOLARSHIP MONEY?

I used my scholarship money for book expenses, housing, and food.

BRAG TO US ABOUT WHAT YOU DID THIS YEAR!

My first quarter at UCSD was frustratingly a rough start to my college career GPA, but once I realized I needed to drastically improve my studying habits and priorities, I managed to get A's and B's for the rest of the winter quarter.



JAZMIN

WHAT'S GOING ON THIS FRIDAY?

**FRIDAY
4.16.21**

**COME ZOOM
WITH US!**

CONSULS GENERAL DAY

LA5's annual tradition: Consuls General Day!

Join us as we celebrate and virtual cheers our distinguished guests



[REGISTER HERE](#)

MARK YOUR CALENDAR!



- April 16** Consuls General Day
- April 16** Club Board Meeting
- April 20** Business Exchange
- April 22** Joint Meeting of the First Five Rotary Clubs
- April 23** Members-Only Club Meeting: Major Donor Recognition
- May 6** Social Hour
- May 7** Children's Court Committee

[CLICK HERE TO VIEW THE CLUB CALENDAR](#)

All Current Events are ZOOM Video Meetings Unless Otherwise Noted



Dear Fellow Rotarians,

The Rotary Club of Long Beach needs our help. President Matt Kinley is requesting that Downey and other local Rotary clubs tell their members of **Long Beach Rotarian Lisa Finn**.

Lisa is their Chair of Youth Services. Last week Lisa was diagnosed with Leukemia. Lisa is currently receiving treatment at City of Hope. Her best hope for full recovery is a bone marrow transplant and she has asked club members to sign up as potential bone marrow donors.

Here is the link to “Be the Match,” which is a system for organizing donors: <https://bethematch.org>. The more people who sign up, the greater chances of finding a donor.

On behalf of the Rotary Club of Long Beach and of Lisa, will appreciate your good thoughts and prayers for her.

For more information, please contact:
Matt Kinley, President #104
Rotary Club of Long Beach
562.715.5557

SPOTTED

LA5 ROTARIANS DOING BIG THINGS!

Our very own Dr. Carmen Schaye hosted an influential virtual session on covid.

Where In The World is Carmen Schye?

Our very own Dr. Carmen Schaye hosted an influential virtual session on covid.

In true LA5 fashion, the event was riddled with influential personalities, including District Supervisor Janice Hahn, Congressman Ted Lieu, and Torrance Mayor Patrick Furey.

The keynote speaker was Dr. Barbara Ferrer who spoke candidly about Covid related vaccination efforts through the lens of empathy and equity.

Congrats to Carmen for a successful and inspiring event! And thank you for your efforts to educate and support our communities - you truly are truly a Rotarian by example.



Join Us

Saturday March 27, 2021 - 12 PM



**A Private Conversation
with
Dr. Barbara Ferrer, Director
Los Angeles County Public Health**

**COVID-19 Q&A
WOMEN AND COVID-19
WOMEN AND THE COVID VACCINE
COVID AND GOING BACK TO SCHOOL**



**INTRODUCTION
Janice Hahn
LOS ANGELES COUNTY SUPERVISOR**

**NATIONAL WOMEN'S POLITICAL CAUCUS
SOUTH BAY**

carmenschaye@gmail.com

**Must register via Zoom here :
[https://us02web.zoom.us/j/3290898338?
pwd=NHR5L09tSUYwVXhPZFNFwkpUzd
pdz09](https://us02web.zoom.us/j/3290898338?pwd=NHR5L09tSUYwVXhPZFNFwkpUzdpdz09)**

Sponsored by



NWPC NATIONAL FOUNDATION

[WATCH FULL SESSION HERE](#)



Planning is underway for our next Rotary year and we need your feedback on these important questions:

[SURVEY LINK](#)



ROTARY MEMBERS INFORMATION NEEDED
FOR D5280 CONFERENCE

Celebration of Life

THE 29TH OF MARCH 2016 DISTRICT
5280 IS COLLECTING THE NAMES OF
OUR ROTARY LOVED ONES WHO HAVE
PASSED AWAY THIS YEAR SINCE ABOUT
JUNE 13, 2020.

USE THE BELOW LINK TO PROVIDE INFORMATION
THAT YOU WOULD LIKE INCLUDED IN THIS MEMORIAL:

[CELEBRATION OF LIFE FORM](#)

The background of the page is a soft-focus image of a sunset or sunrise over a vast sea of white, fluffy clouds. The sky is a pale, hazy blue, and the clouds are illuminated from below, creating a warm, golden glow.

PRINT WITH PACE PLANT TREES

*Alan Bernstein, Director, Client Solutions
Pace Marketing Communications*



JOIN THE PACE GROUP'S PLEDGE
TO PLANT 10,000 TREES IN 2021

PRINT ONE, PLANT ONE

I'm very excited to announce that The Pace Group is leading the way to a greener world with “net tree neutral” printing. We're partnering with PrintReleaf to replace every single standard tree used for all your print projects. The formula for healthier forests is powerful!

How does it work?

- First, we measure every project we produce for paper consumption
- The number of trees harvested to produce that paper is calculated
- The identical number of trees is then reforested (under the guidance of PrintReleaf) at planting sites around the world

This global effort restores and protects native ecologies and animal habitats, while providing much-needed jobs for people local to these sites. Importantly, all reforestation efforts are monitored and certified by a third-party auditor.

alan.bernstein@engagepace.com / Mobile: (213) 309-9253

Happy Birthday!

Hytowitz, Barry- Apr 12
Takakawa, David- Apr 12

H



HAPPY ROTARY ANNIVERSARY

Thank you for your years of service to **LA5**
& the Los Angeles community!

Anniversaries:

Wagenseller, Laine - 12 years

Black, Lee - 13 years

